

INTRODUCING REMEDIADE



WHAT IS REMEDIADE?

RemediAde is a highly effective and eco-friendly, all natural and organic solution that rapidly bio-remediates hydrocarbon spills in soil and water.

WHAT DIFFERENTS REMEDIADE FROM OTHER BIOREMEDIATION PRODUCTS?

RemediAde is a nutrient based product. RemediAde does not introduce foreign bacteria to protected and sensitive environments. RemediAde simply provides a food source for the local bacteria to populate rapidly and then eat the hydrocarbons. RemediAde is a true bioremediation agent is NOT a surface washing agent like "Nature's Way HS" or a biological additive like "Micro-Blaze".

HOW LONG HAS REMEDIADE BEEN AROUND AND WHO USES IT?

RemediAde has been around for over 20 years. The product has been used by major oil companies, mid major oil companies as well as independents.

WHAT DOES REMEDIADE TREAT?

RemediAde treats all hydrocarbon spills on land as well as on water. RemediAde also effectively bio-carbon based spills. RemediAde treats: Pipeline breaks and spills, storage tank overflows, oil contamination in marshes and on beaches, wellhead clean ups, refinery cleanups and salt water (brine) contamination.

WHAT IS THE AVERAGE TIME TO EXPECT WHEN CLEANING UP A SPILL?

In most cases RemediAde reduces the odor of the hydrocarbons within the first 7 hours and in most spills no smell is detectable by day 5. Depending on TPH levels and clean up mandates, no more than 3 treatments of RemediAde per job site is required. Most cleanups are successful after only 2 treatments. Depending on the weight and amount of refining, RemediAde cleans up gasoline and diesel in 5-7 days, unprocessed crude in 2-3 weeks and refined oil in up to 3 weeks. However, in most cases, a near complete breakdown is seen by day 7.

WHAT IS THE APPLICATION RATE FOR REMEDIADE?

1 gallon of remediAde for 30 cubic yards of contaminated soil or 30 feet squared of surface water at TPH concentrations of 20,000.

IS REMEDIADE TOXIC?

No. RemediAde is safe to people, plants and animals.

IS REMEDIADE EPA NCP LIST APPROVED?

Yes.

IS REMEDIADE EASY TO STORE AND APPLY WHEN NEEDED?

Yes and Yes. The shelf life is 2 years if unopened, and 1 year once opened. RemediAde is to always be blended 10:1 with non-chlorinated water and should be applied to affected spill surface generally through a spray mechanism.

IS REMEDIADE IN A LIQUID OR DRY/GRANULAR FORM?

Liquid only.

IN WHICH SIZE CONTAINERS IS REMEDIADE SOLD?

Five(5) and fifty-five (55) gallons containers

WHY REMEDIADE OVER OTHER SIMILAR PRODUCTS?

1. RemediAde is the best product
2. RemediAde is more effective and it works faster (See EPA test data).
3. RemediAde does not introduce foreign bacteria or need bioremediation nutrients to be added for it to be effective.

All natural bio-remediation agent for treatment of hydrocarbon spills on soil and water.



THE FIRST CHOICE

FOR HYDROCARBON BIO-REMIEDIATION



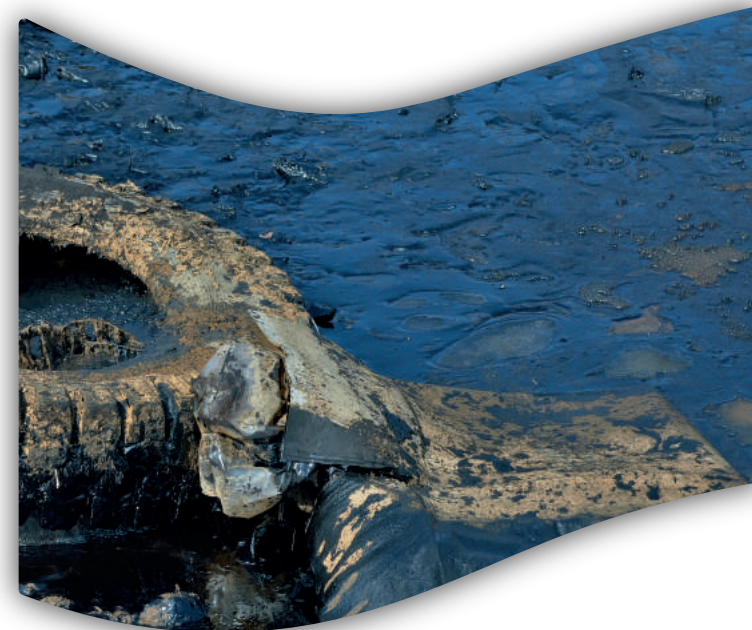
RemediAde is a highly-effective and eco-friendly, all natural and organic (non-chemical) solution that rapidly bio-remediates hydrocarbons in soil and water. RemediAde is easily applied to contaminated land and water in the event of spills or leaks of oils and hydrocarbons.

REMIADIAD E SUCCESSFULLY REMEDIATES

- Pipeline breaks and spills
- Storage tank overflows
- Oil contamination cleanup in marshlands and beaches
- Soil remediation at and around tank farms
- Wellhead clean ups
- Hydrocarbon dump yard soil remediation
- Refinery clean ups
- Creosote contamination

REMIADIAD E EFFECTIVENESS

Depending on the weight and amount of refining, RemediAde cleans up gasoline and diesel in 5-7 days, unprocessed crude oil in 2-3 weeks and refined oil in 2-3 weeks. In most cases, a total breakdown of the oil is seen by day seven.



All natural bio-remediation agent for treatment of hydrocarbon spills on soil and water.



HISTORY OF REMEDIADE

RemediAde has been used by the oilfield, chemical and manufacturing industries for over 20 years. RemediAde is cost effective and has been used in hundreds of hydrocarbon and salt water spill clean-ups in oilfield ops and at chemical plant facilities.

RemediAde is a blend of plant extracts and other organic substances designed to promote rapid insitu bacteria growth for bio-remediation of hydrocarbons. The unique process for production of RemediAde extracts polysaccharides, enzymes, vitamins, hormones, polyuronic acids and humic acids all of which contribute to the rapid growth of bacteria that effectively assists in the bio-remediation of hydrocarbons.

REMEDIADE™ APPLICATION

The application rate of RemediAde is determined by the amount of area to be treated, the level of contamination and TPH end results to be achieved. In low gravity oil spills, an additional surfactant is added to help bacteria to move through the oil spill more readily.

On water, the application process is customized based on water type, gravity of the spill fluids and specific spill factors. Instructions are attached to the product containers.

PROJECT MANAGEMENT USING REMEDIADE

GrowMate International LLC offers remediation project design and technical support services to the end-user client and/or engineering consulting firms involved in the clean up process. Additionally, infield support and turnkey project management is now available on-site for a fee.

The project consulting and labor service offered by GrowMate International LLC is intended to aid the end user with the application of RemediAde in the most effective and efficient manner. Examples include: training field crews on proper remediation techniques, overseeing difficult product applications and technical consulting based on operating conditions of the site being remediated.



REMEDIADE CLEAN UP CASES

Post
Spill



Hydrocarbon Spill



2 weeks
Later

Pumping wellhead spill. The spill covered a large area with the contamination seeping 2"-3" deep into the soil. The polluted area was disked and RemediAde was applied at .38 gallons per cubic yard. Initial TPH contamination was 54,426. After two weeks the treated area had a TPH of 9,895, and after four weeks the TPH was reduced to 14 with no odor of hydrocarbons.

Post
Spill



Brine Spill



7 weeks
Later

Waste water disposal site. Overflow from pit created major brine spill. The spill area was disked and treated with RemediAde at an application rate of .14 gallons per cubic yard. Following treatment, the area was seeded with Bermuda grass. Image shows recovery results after just seven weeks.

Post
Spill



Hydrocarbon and Brine Spill



2 months
Later

Tank battery spill. This incident involved crude oil and brine that polluted the well site location. The contaminated site was treated with 55 gallons of RemediAde per acre. Following treatment, the site was seeded with Bermuda grass. Image shows recovery results after only two months.

All natural bio-remediation agent for treatment of hydrocarbon spills on soil and water.



REMEDIADE

HYDROCARBON CLEAN UP CLIENTS



This is just a sample of the hydrocarbon clean up cases. RemediAde has successfully cleaned up hundreds of oil and hydrocarbon spills over the past 20 years. The scope and scale specifics differ from case to case, but the effectiveness of RemediAde is highly consistent. For 20 years, RemediAde has performed exceptionally for all clients, large and small.



- Used for hydrocarbon spills
- Used for hydrocarbon pit closure clean ups
- Houston and Katy, Texas area clean ups
- Client since 1999



- Used for hydrocarbon spills
- Remediated creosote contamination in waterways
- Cleaned up burial waste site at plant
- Reduced 22,000 TPH to <100 TPH
- Plant located in Beaumont and Texas



- Used for hydrocarbon spills
- Used for saltwater spills
- Used for oil tank overflow spills
- Multiple clean ups in Matagorda County, Texas
- Client since 2002

Texas Gulf Sulphur

- Cleaned up hydrocarbons, diesel and chlorinated hydrocarbons
- Site cleanup exceeded 10,000 cubic yards
- Reduced 75,000 TPH to <100 TPH
- Client since 2000



- Used for hydrocarbon spills
- Used for oil leaks and spills
- Used on land and coastal areas in south Texas
- Client since 2006

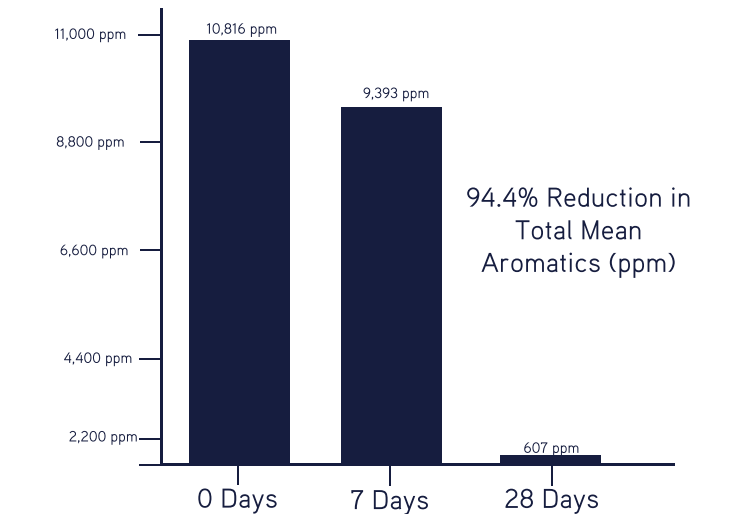
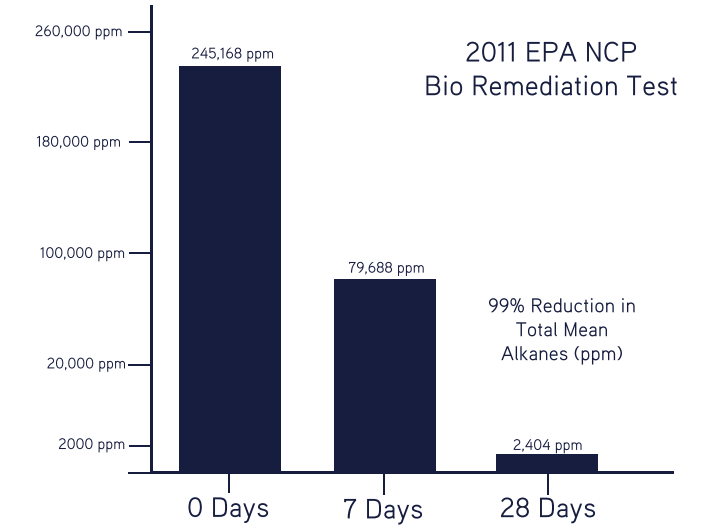
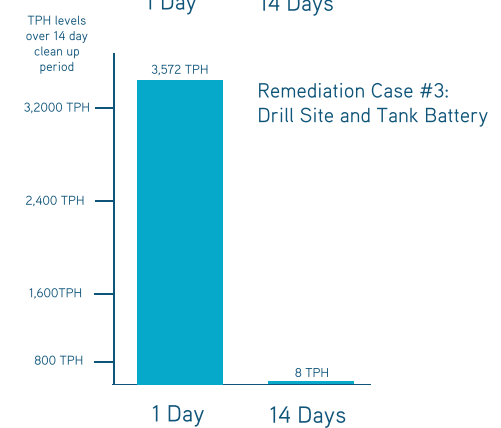
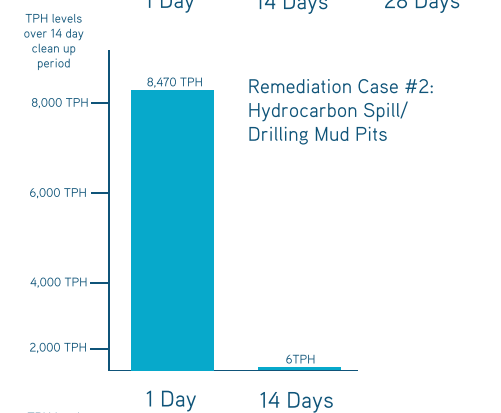
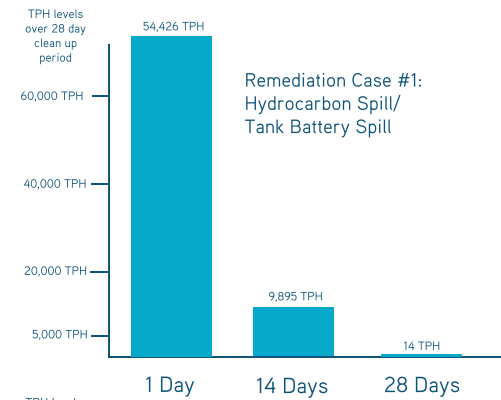


- Lead oil spill response product used in overflows, leaks and post storm clean up requirements
- Successfully cleaned up crude oil spills
- Cleaned up hydrocarbon spills
- Remediated multiple site locations in Texas



- Client since 1990
- Oil spill clean up
- Pipeline break clean up
- Used for spill cleanups in Texas - Client since 2008

REMEDIADE CLEAN UP CASES



All natural bio-remediation agent for treatment of hydrocarbon spills on soil and water.





MATERIAL SAFETY DATA SHEET



I. HAZARDOUS INGREDIENTS / IDENTITY INFORMATION

RemediAde is a proprietary formulation which contains minerals and organics. This product should be handled accordingly. Complies with OSHA 29 CFR XVIII-1910.1200 section (I) "Trade Secrets" Contains no hazardous components under current OSHA deni-tions. DOT: Not Regulated

II. PHYSICAL / CHEMICAL CHARACTERISTICS

Boiling Point – > 212 Degrees F.

Spec Gravity (H₂O = 1) – 1.06

Vapor Pressure – Same as water

Vapor Density (Air = 1) – Same as water

Solubility in Water – Soluble in all ratios. pH is 7.0 or slightly greater.

Evaporation Rate (Butyl Acetate = 1) – Same as water

Appearance and Odor – Black liquid with some odor and medium viscosity.

III. FIRE AND EXPLOSION HAZARD DATA

Flash Point (Method Used) – None (COC)

Flammable Limit – %

LEL – N/A

UEL – N/A

Extinguishing Media – N/A

Special Fire Fight Proc – N/A

Unusual Fire and Explosion Hazards - N/A

IV. REACTIVITY DATA

Stability – Stable

Conditions to Avoid – None

Polymerization – Will not occur

Conditions to Avoid – None known.

Incompatibility (Mat. to Avoid) – Any Substance with a low pH.

V. HEALTH HAZARD DATA

Route(s) of Entry - Inhalation: Nil - Skin: Nil - Ingestion: Nil

Health Hazards (Acute and Chronic) - Skin: Concentrate will dry out and chap as would detergent. Eyes: May cause discomfort.

Carcinogenicity - NTP: Nil - IARC Monographs: Nil - OSHA Regulated: Nil.

Signs and Symptoms of Exposure - Skin: dryness, redness, chapping. - Eyes: Tearing, Redness, Blurred Vision. - Ingestion: May cause vomiting.

Emergency and First Aid Procedures - Eyes: Flush with water for 15 min. Seek medical attention if irritation persist. - Skin: Flush with water. - Ingestion: Seek medical attention.

VI. PRECAUTIONS FOR SAFE HANDLING AND USE

Steps to Be Taken in Case Material is Released or Spilled - Remove leaking package to a safe area and wash with water.

Waste Disposal Method - Any approved method for dilute cleaner. Highly bio-degradable

Precautions to Be Taken in Handling and Storing - None in normal storage, shipment, or use.

Other Precautions - None

VII. CONTROL MEASURE

Respiratory Protection (Specify Type) – None

Ventilation - Local Exhaust: Desirable - Special: None- Mechanical (General): Helpful in congested area- Other: None

Protective Gloves - Rubber Gloves

Other Protective Clothing Equipment - Long sleeved shirt buttoned at neck desirable and rubber boots.

Work/Hygienic Practices - Wash after use. Remove and wash contaminated clothing before reusing.

REMEDIADE IS NCP LISTED BY THE EPA

RemediAde is on the U.S. Environmental Protection Agency's NCP Product Schedule. This listing does not mean that EPA approves, recommends, licenses, certifies, or authorizes the use of RemediAde on an oil discharge. This listing means only that data have been submitted to EPA as required by subpart J of the National Contingency Plan, 40 CFR Section 300.915.

All natural bio-remediation agent for treatment of hydrocarbon spills on soil and water.

